

THE FRED HOLLOWES FOUNDATION

The Comprehensive Eye Care Model in Vietnam (2003-2016)

September 2018



THE COMPREHENSIVE EYE CARE MODEL

The Fred Hollows Foundation implemented the Comprehensive Eye Care (CEC) Model in Vietnam in collaboration with the Provincial Department of Health in 19 provinces, from 2003 to 2016. The CEC model is a comprehensive set of interventions designed to support all levels of the provincial eye health system. The five components of the model are:

- 1. Human resource development** – clinical and primary eye care training for eye care workers
- 2. Enabling infrastructure** – support for infrastructure, such as buildings and equipment
- 3. Disease control** – support for eye health screening and treatment, such as cataract surgery

4. Partnership and coordination – strengthening project management skills and coordination for eye health service providers and other stakeholders

5. Eye health promotion - education and information activities, including distribution of education campaign materials.

THE EVALUATION

The Foundation collaborated with the Australian consulting firm ZEST Health Strategies to evaluate the CEC Model from January to August 2018. The purpose of the evaluation was to identify key lessons from the CEC Model as well as its medium-term outcomes.

Data was collected from a sample of four provinces: Hoa Binh, Vinh Long, Phu Yen and Quang Ngai.

The Fred Hollows Foundation

The Foundation is an international development organisation working towards eliminating avoidable blindness. It has worked in Vietnam since 1992, alongside the Viet Nam Ministry of Health, the Viet Nam National Institute of Ophthalmology and provincial partners.

The Fred Hollows Foundation
Locked Bag 5021, Alexandria NSW 2015
02 8741 1900 | hollows.org | fhf@hollows.org



The Fred Hollows
Foundation

The evaluation identified lessons learnt from implementing the CEC Model in Vietnam in:

- ▶ Partnerships
- ▶ Training
- ▶ Community education campaigns
- ▶ The transition to social health insurance
- ▶ Factors that reinforced sustainability of Foundation-supported activities.

- ▶ Provincial Government co-funding of CEC Model activities
- ▶ A strong and well-coordinated primary eye care network
- ▶ The quality of formal clinical training and availability of follow-up mentoring and supervision
- ▶ Good community awareness of eye health that results in patients presenting earlier to be screened and a gradual reduction in severe cases in communities
- ▶ The need for improvements in the quality of eye health service delivery e.g. cataract surgery and national monitoring and reporting on quality.

Key issues

The evaluation identified some of the key factors that influenced the success of the CEC Model:

- ▶ The working relationships between the relevant Provincial Government authorities and The Foundation
- ▶ Long-term eye health planning and annual reviews by Provincial Governments

Program outcomes

The Program resulted in improved outcomes in availability, accessibility, quality and uptake of eye health services. See Figure 1 below for key results.

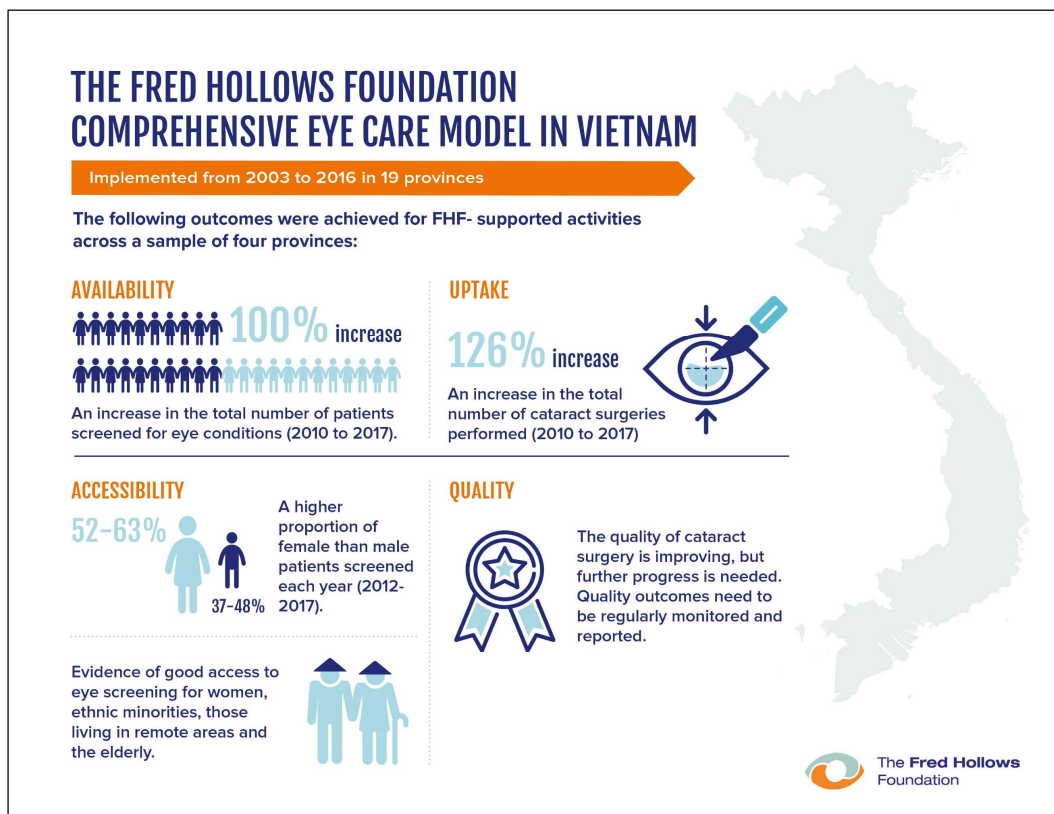


Figure 1: Program outcomes

The four provinces: Hoa Binh, Vinh Long, Phu Yen and Quang Ngai

The Fred Hollows Foundation receives support from the Australian Government through the Australian NGO Cooperation Program (ANCP)